



ANA ROQUE  
INTERIORS



*elegance*  
COLLECTION

## INDEX

OUR BEST  
COLLECTION EVER

05	ELEGANCE COLLECTION
06	<b>LIVING ROOM</b>
10	ARMCHAIR
22	COFFEE TABLE
36	TV STAND
44	SOFAS
52	<b>DINING ROOM</b>
56	DINING TABLE
64	CHAIR
80	SIDEBOARD
86	CUPBOARD
92	<b>BEDROOM</b>
96	BED
112	BEDSIDE TABLE
124	CHEST OF DRAWERS
132	BENCHES
146	DRESSING TABLE
152	CHAISE LONGUE
156	<b>ENTRY HALL</b>
160	CONSOLE
168	MIRROR
174	COLUMN
178	<b>OFFICE</b>
182	DESK
188	BOOKCASE
192	<b>FINISHES</b>





## ELEGANCE COLLECTION

THE ELEGANCE COLLECTION AIMS TO INSPIRE NOT ONLY A LUXURIOUS LIFESTYLE BUT ALSO EVERYDAY LIFE COMBINING UNIQUE PIECES OF FURNITURE, TAKING YOU ON A JOURNEY THROUGH SPACE AND TIME.

TRANSFORMING CURRENT TRENDS AND THE PERFECT COMBINATIONS OF PAST AND PRESENT ALLOW US TO CREATE ECLECTIC PIECES OF FURNITURE WITH A CONTEMPORARY TWIST.

EXPLORE YOUR CREATIVITY AND COME UP WITH THE BEST SOLUTIONS FOR INTIMATE AND COZY ENVIRONMENTS THAT EXPRESS ELEGANCE AND LUXURY.

THIS COLLECTION ACHIEVES A PERFECT AND HARMONIOUS BALANCE USING ONLY THE HIGHEST QUALITY MATERIALS IN AN HANDCRAFTED AND INNOVATIVE PRODUCTION PROCESS.

AMAZING PIECES

BEAUTIFUL SPACES

LIVING  
ROOM









ARMCHAIR



ARBOR ARMCHAIR

CADE045

MATERIALS: METAL AND 5.5M FABRIC  
W 95 CM . D 95 CM . H 75CM - 1700P

WITH AN IRREVERENT AND MODERN STYLE, THE ARBOR ARMCHAIR BRINGS ECCENTRICITY AND LUXURY, FOR ITS IMPOSING SHAPE AND BRASS DETAILS, PROVIDING A SOPHISTICATED ENVIRONMENT.



### BARK ARMCHAIR

CADE047

MATERIALS: WOOD AND METAL - 4M FABRIC  
W 89 CM . D 90 CM . H 74CM - **2250P**

A LUXURIOUS ARMCHAIR, MADE IN WOOD WITH BRASS DETAILS, A LUXURIOUS ARMCHAIR, MADE OF WOOD WITH BRASS DETAILS, PRESENTS A STRIKING PRESENCE IN ANY ENVIRONMENT.



### BOSSA ARMCHAIR

CADE048

MATERIALS: WOOD AND METAL - 3.5M FABRIC  
W 66 CM . D 72 CM . H 74CM - **2600P**

SIMPLE BUT SOPHISTICATED, BOSSA ARMCHAIR IS A CLASSIC RENEWED, THAT COMBINES WOOD WITH BRASS DETAILS.



### BURT ARMCHAIR

CADE036

MATERIALS: METAL AND 4M FABRIC  
W 75 CM . D 70 CM . H 78CM - **1900P**

THE BURT ARMCHAIR CAN BE ADAPTED TO ANY ROOM AND BE AN INTEGRAL PART OF YOUR INTERIOR DESIGN. ITS ROUND SHAPES TRANSMIT BOTH COMFORTS AS WELL AS GRANDIOSITY, WHETHER IT IS PLACED IN A MODERN LIVING ROOM OR IN A COMFORTABLE MASTER BEDROOM.



### COLBY ARMCHAIR

CADE049

MATERIALS: METAL AND 3.5M FABRIC  
W 82 CM . D 84 CM . H 70CM - **2450P**

THE COLBY ARMCHAIR IS A REMARKABLE PIECE, WITH LOTS OF PERSONALITY. THE BASE IN GOLD BRASS GIVES IT A LUXURIOUS AND ELEGANT TOUCH.





CREST ARMCHAIR

CADE050

MATERIALS: 5M FABRIC

W 96 CM . D 88 CM . H 74 CM - 2100P

A DESIGN WITH ORGANIC LINES GIVES THIS ARMCHAIR COMFORT AND A HARMONIOUS ENVIRONMENT.



FAZE ARMCHAIR

CADE051

MATERIALS: METAL AND 4M FABRIC

W 84 CM . D 78 CM . H 74 CM - 2300P

WITH ITS RELAXED LINES, THE FAZE ARMCHAIR IS VERSATILE AND VERY COMFORTABLE. IT WILL LOOK GOOD IN A MODERN ENVIRONMENT.







LUC ARMCHAIR

CADE043

MATERIALS: LACQUERED WOOD, METAL  
AND 3M FABRIC  
W 76 CM . D 69 CM . H 76CM - 2100P

WITH AN IRREVERENT AND MODERN STYLE,  
THE LUC ARMCHAIR BRINGS ECCENTRICITY  
AND LUXURY, FOR ITS IMPOSING SHAPE AND  
BRASS DETAILS, PROVIDING A MODERN AND  
SOPHISTICATED ENVIRONMENT.



LYN ARMCHAIR

CADE032

MATERIALS: METAL AND 3M FABRIC  
W 75 CM . D 83 CM . H 70 CM - **1700P**

A VERY ELEGANT ARMCHAIR WITH LOTS OF ATTITUDE. AN OUTSTANDING PIECE IN ANY AREA OF YOUR HOME DUE TO ITS CONTEMPORARY DESIGN.



MEGAN ARMCHAIR

CADE042

MATERIALS: METAL AND 3M FABRIC - SWIVEL  
FABRICS COMB.: 1.5M STRUCTURE - 1.5M SEAT

W 76 CM . D 74 CM . H 71 CM - **1500P**

MEGAN IS A MODERN ARMCHAIR WITH A GOLD METAL BASE FINISH THAT BRINGS LUXURY AND COMFORT TOGETHER INTO ONE. ITS VERSATILE NATURE ENSURES IT ADAPTS TO MOST STYLES AND FUNCTIONS. TIMELESS WITH A MODERN TWIST, MEGAN ARMCHAIR IS AN ITEM OF BOUNDLESS ELEGANCE.



MILLER ARMCHAIR

CADE035

MATERIALS: 3.5M FABRIC AND METAL DETAILS  
FABRICS COMB.: 2M STRUCTURE - 2M SEAT

W 76 CM . D 66 CM . H 80 CM - **1200P**

ITS CURVED LINES AND HARMONIOUS LOOK GIVES THIS ARMCHAIR A GOOD FEELING OF COMFORT WHILE SEATING.



MILOS ARMCHAIR

CADE052

MATERIALS: METAL AND 3.5 FABRIC  
W 84 CM . D 81 CM . H 80 CM - **2400P**

THE INTEMPORAL CONCEPT TURNS MILOS ARMCHAIR IN A ECLECTIC PIECE, WHICH EASES THE CONJUGATION WITH OTHER PIECES IN THE SAME SPACE.





## ZUNI ARMCHAIR

CADE046

MATERIALS: METAL AND 3 FABRIC  
W 85 CM . D 76 CM . H 68 CM - 4000P

WITH BOLD LINES, ZUNI ARMCHAIR COMBINES ELEGANCE AND SOPHISTICATION. A LUXURIOUS ARMCHAIR THAT WILL STAND UP BOTH IN A MODERN AS IN A CLASSIC SETTING.







## COFFEE TABLES

ANA ROQUE | LUXURY | COLLECTION



### BILLY COFFEE TABLE

MAPO59

MATERIALS: WOOD OR LACQUERED

W 60 CM . D 60 CM . H 49 CM - **1750P**  
W 100 CM . D 100 CM . H 40 CM - **2150P**

MATERIALS: WOOD OR LACQUERED AND STONE

W 60 CM . D 60 CM . H 49 CM - **2450P**  
W 100 CM . D 100 CM . H 40 CM - **2950P**

THE ELEGANCE OF BILLY CENTER TABLE ECHOES IN ITS SHAPE AND MATERIALS. SIMPLE YET SOPHISTICATED, THE GENEROUS SILHOUETTE FUSES WITH THE MARBLE NOBILITY, CONTRASTING WITH A BEAUTIFUL WOOD AND METAL DETAILS. ITS PRESENCE WILL BRING LUMINOSITY TO ANY LIVING ROOM DESIGN.



COCUN COFFEE TABLE

MAPO60

MATERIALS: WOOD OR LACQUERED, METAL  
W 60 CM . D 60 CM . H 44 CM - **1700P**  
W 110 CM . D 110 CM . H 35 CM - **2800P**

MATERIALS: WOOD OR LACQUERED, METAL AND STONE  
W 60 CM . D 60 CM . H 44 CM - **2100P**  
W 110 CM . D 110 CM . H 35 CM - **3100P**

THE COCUN COFFEE TABLE IS ANOTHER ADDITION TO OUR COFFEE TABLES COLLECTION, FEATURING A MORE CLASSIC LOOK, BUT JUST AS STRIKING AS EVER. IT IS A TIMELESS PIECE, WITH SIMPLE ELEGANCE AND STRONG PERSONALITY.



GIO COFFEE TABLE

MAPO55

MATERIALS: WOOD AND METAL  
Ø 110 CM . H 27 CM - **1850P**

MATERIALS: WOOD, STONE AND METAL  
Ø 110 CM . H 27 CM - **3200P**

WITH A STUNNING STRUCTURE MADE OF WOOD AND AN ELEGANT TOUCH ADDED BY ITS MARBLE TOP MAKES THE GIO COFFEE TABLE PERFECT FOR HIGHLIGHTING YOUR INTERIORS.



GIO II COFFEE TABLE

MAPO56

MATERIALS: WOOD AND METAL  
Ø 50 CM . H 46 CM - **1150P**

MATERIALS: WOOD, STONE AND METAL  
Ø 50 CM . H 46 CM - **1800P**

WITH A STUNNING STRUCTURE MADE OF WOOD AND AN ELEGANT TOUCH ADDED BY ITS MARBLE TOP MAKES THE GIO COFFEE TABLES PERFECT FOR HIGHLIGHTING YOUR INTERIORS.





### JOANNE COFFEE TABLE

MAPO61

MATERIALS: WOOD, LACQUERED AND METAL  
Ø56 CM . H 50 CM - 1200P

JOANNE SIDE TABLE HAS A MINIMALISTIC AND ATTRACTIVE SHAPE. THE TWO CONTRASTING ELEMENTS, METAL AND WOOD, ENHANCE ITS SLENDER SHAPE.



### JOE COFFEE TABLE

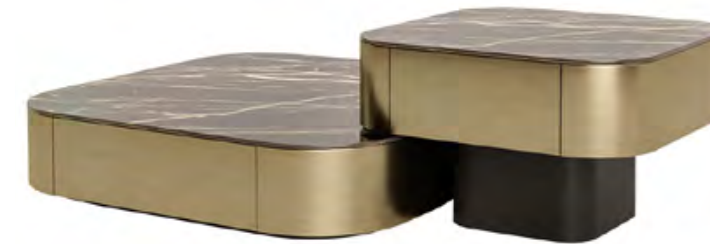
MAPO28

MATERIALS: STONE AND METAL  
Ø55 CM . H 50 CM - 1500P  
Ø100 CM . H 40 CM - 2500P

THESE LUXURIOUS COFFEE TABLES ARE THE PERFECT COMBINATION OF GLAMOR AND CHARM. NOBLE MATERIALS SUCH AS BRASS AND STONE GIVE IT A UNIQUE LOOK.







### NORTH COFFEE TABLE

MAPO62

MATERIALS: WOOD OR LACQUERED AND METAL  
W 50 CM . D 50 CM . H 38 CM - **2200P**  
W 100 CM . D 100 CM . H 20 CM - **2800P**

MATERIALS: WOOD, STONE AND METAL  
W 50 CM . D 50 CM . H 38 CM - **3100P**  
W 100 CM . D 100 CM . H 20 CM - **3900P**

THE NORTH COFFEE TABLE COMBINES THE KNOWLEDGE AND THE EXPERIENCE OF CRAFTSMANSHIP TO CREATE A LUXURIOUS SILHOUETTE.

WITH A BEAUTIFUL MARBLE TOP WRAPPED IN A SHINING METAL BAND, TURNS THESE COFFEE TABLE IN A SUMPTUOUS PIECE THAT BLENDS THE SPLENDOR OF ART WITH A STRONG PERSONALITY.



### OSTRO COFFEE TABLE

MAPO65

MATERIALS: WOOD AND METAL  
Ø50 CM . H 48 CM - **1800P**  
Ø100 CM . H 32 CM - **2600P**

MATERIALS: WOOD, STONE AND METAL  
Ø50 CM . H 48 CM - **2200P**  
Ø100 CM . H 32 CM - **3800P**

THE CIRCULAR SHAPES AND ROUND DESIGN OF THIS COFFEE TABLE ARE FLORAL-INSPIRED. THE IMAGE OF A FLOWER REACHING THE SKIES AND EMERGING FROM THE PLAINS INSPIRED THE CREATION OF THIS ITEM.

WITH A CIRCULAR WOODEN BODY AND MARBLE TOP, THIS COFFEE TABLE NOT ONLY FEATURES A VERSATILE DECORATIVE SET, IT ALSO HAS A THIN GOLD METAL STRIP THAT GIVES IT A MODERN APPEAL.





### PERRY COFFEE TABLE

MAPO63

MATERIALS: WOOD OR LACQUERED AND METAL

Ø50 CM . H 40 CM - 2100P

Ø100 CM . H 32 CM - 2200P

MATERIALS: WOOD OR LACQUERED, STONE AND METAL

Ø50 CM . H 40 CM - 2900P

Ø100 CM . H 32 CM - 3400P

THE MOST DISTINCTIVE APPEAL OF PERRY'S COFFEE TABLES LIES IN THE BASE. THE IRREGULAR SILHOUETTE HOLDS A CIRCULAR STONE WITH EXQUISITE BRASS DETAIL, MAKING A VIBRANT DESIGN.



### PLUM COFFEE TABLE

MAPO58

MATERIALS: WOOD OR LACQUERED AND METAL

Ø50 CM . H 50 CM - 2500P

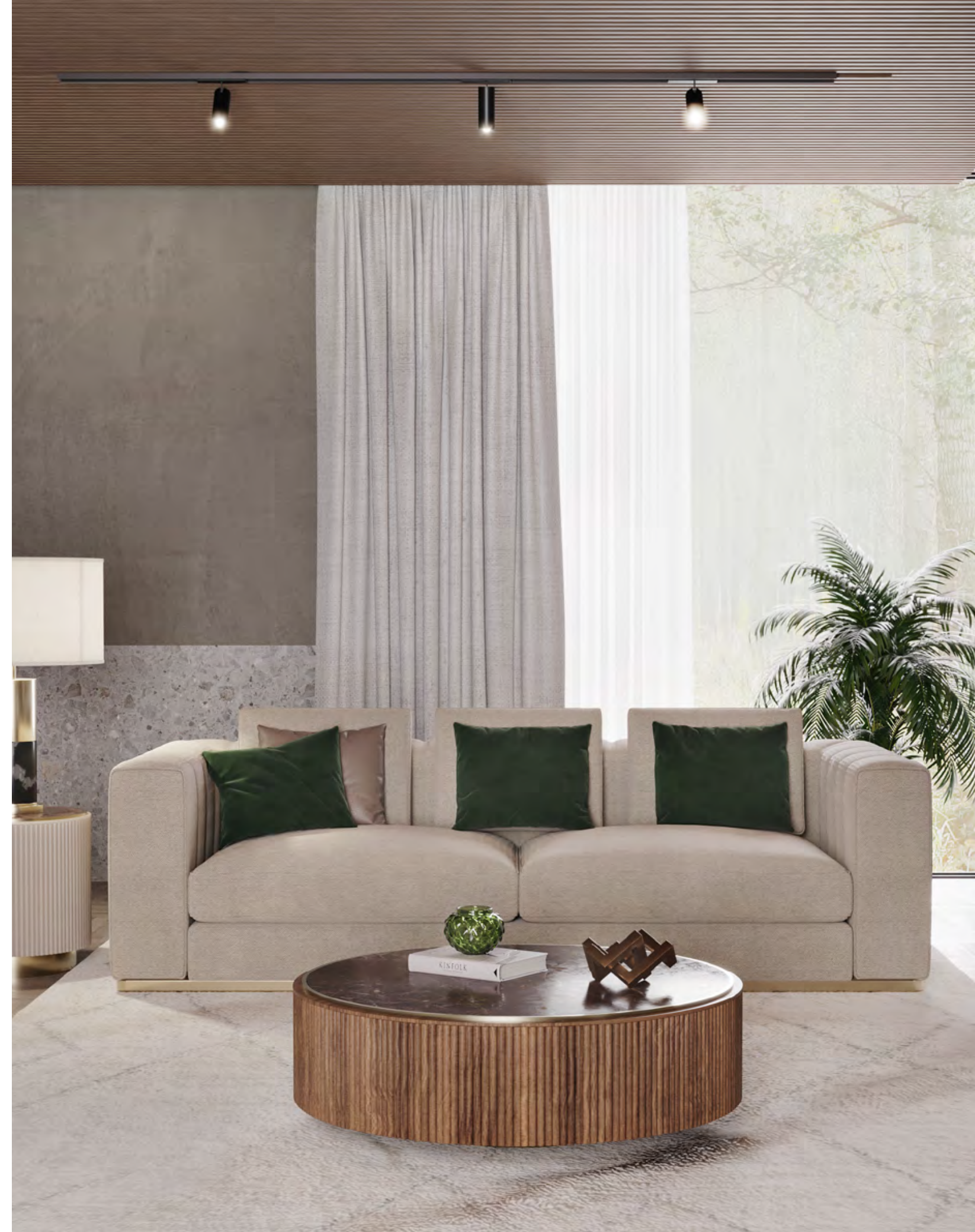
Ø100 CM . H 34 CM - 2600P

MATERIALS: WOOD OR LACQUERED,  
STONE AND METAL

Ø50 CM . H 50 CM - 3250P

Ø100 CM . H 34 CM - 3900P

THE PLUM COFFEE TABLE SYMBOLIZES THE UNION OF LUXURY AND STRENGTH. THE MARBLE SURFACE FLAWLESS AND SHINY, POINTS TO A PROSPEROUS FUTURE, REMINDING ONE TO TOAST TO PROSPERITY.







ROMY II COFFEE TABLE

MAPO44

MATERIALS: STONE AND METAL  
W 55 CM . D 55 CM . H 52 CM - 2700P

THESE COFFEE TABLES ARE STRIKING AND ROBUST PIECES WITH LUXURY FINISHES, COMBINING BRASS WITH MARBLE.



ROMY ROUND COFFEE TABLE

MAPO48

MATERIALS: STONE AND METAL

Ø60 CM . H 52 CM - 3100P  
Ø120 CM . H 37 CM - 4100P

FEATURING A ROUND SHAPE, AND A MARBLE TOP, THIS CENTER TABLE IT IS ALREADY AN ICONIC PIECE OF THIS COLLECTION.



SCOTT COFFEE TABLE

MAPO41

MATERIALS: STONE AND METAL

Ø60 CM . H 50 CM - 1700P  
Ø100 CM . H 46 CM - 2350P

THESE CONTEMPORARY COFFEE TABLES RESULTS FROM A COMBINATION OF A VINTAGE DESIGN.



### TENOR COFFEE TABLE

MAPO64

MATERIALS: WOOD OR LACQUERED AND METAL

Ø50 CM . H 42 CM - **3200P**  
Ø70 CM . H 36 CM - **3300P**  
Ø100 CM . H 32 CM - **3400P**

MATERIALS: WOOD OR LACQUERED,  
STONE AND METAL

Ø50 CM . H 42 CM - **3900P**  
Ø70 CM . H 36 CM - **4100P**  
Ø100 CM . H 32 CM - **4500P**



### YOUNG COFFEE TABLE

MAPO31

MATERIALS: WOOD OR LACQUERED AND METAL

Ø50 CM . H 50 CM - **1300P**  
Ø70 CM . H 60 CM - **1600P**

THIS MODERN TABLE REFLECTS SOPHISTICATION THROUGH ITS MINIMAL DESIGN AND LUXURIOUS BRASS NECKLACE.

THREE COFFEE TABLES, DIFFERENT IN HEIGHT, CONTRAST EACH OTHER, TO GIVE THE ROOM A MORE APPEALING LOOK. TENOR COFFEE TABLES FEATURES A DELICATE INTERPLAY BETWEEN WOOD, STONE AND BRASS, WHERE THE DIFFERENT MATERIALS TAKE SHAPE IN ELEGANT SILHOUETTES, ENHANCING THEIR PURE CHARACTERISTICS.







TV STAND



AMAN TV STAND

MAPO25

W 220 CM . D 45 CM . H 44 CM

MATERIALS: WOOD OR LACQUERED AND METAL  
WITH 2 DOORS AND 1 DRAWER - **3600P**

MATERIALS: WOOD OR LACQUERED, STONE AND METAL  
WITH 2 DOORS AND 1 DRAWER - **4700P**

A MINIMALIST TV STAND, INSPIRED BY THE  
MINIMAL ARCHITECTURE STYLE. COMBI-  
NES THE SIMPLE STRUCTURE WITH A SLIM  
LEGS, IN A LANGUAGE OF LIGHTNESS AND  
ELEGANCE.





### CANYON TV STAND

MAPO23

W 240 CM . D 44 CM . H 49 CM

MATERIALS: WOOD OR LACQUERED AND METAL  
WITH 4 DOORS AND 1 DRAWER - **4900P**

CANYON TV STAND IS A DISTINCTIVE AND EXQUISITE PIECE. FULL OF CHARM, THE METAL ACCENTS PROVIDES LUXURY AND GLAMOUR.







### CHARLIZE TV STAND

MTVO09

MATERIALS: WOOD OR LACQUERED AND METAL  
WITH 3 DOORS

W 210 CM . D 40 CM . H 44 CM - **2850P**  
W 270 CM . D 40 CM . H 44 CM - **3300P**

CHARLIZE IS A TV STAND THAT WILL BRING A STRONG BUT DELICATE PRESENCE TO YOUR LIVING ROOM.



### FOZ TV STAND

MTVO26

W 240 CM . D 45 CM . H 40 CM  
MATERIALS: WOOD OR LACQUERED AND METAL.  
WITH 2 DOORS, 1 DRAWER - **5850P**

MATERIALS: WOOD OR LACQUERED, STONE AND  
METAL. WITH 2 DOORS, 1 DRAWER - **6950P**

FOZ IS AN ELEGANT TV STAND THAT COMBINES A BEAUTIFUL WOOD STRUCTURE WITH A LUXURIOUS MARBLE TOP AND A HOLLOW SPACE WITH A WOOD SHELF. A STRIKING CHOICE FOR A LUXURY LIVING ROOM.





### MISIA TV STAND

MAPO24

W 210 CM . D 45 CM . H 45 CM

MATERIALS: WOOD OR LACQUERED AND METAL.  
WITH 2 DOORS- **5450P**

MATERIALS: WOOD OR LACQUERED,  
STONE AND METAL. WITH 2 DOORS- **6300P**

A PIECE OF GREAT ELEGANCE AND VERSATILITY, THE MISIA TV STAND BRINGS FRESHNESS AND CHARM BOTH IN A MODERN OR MORE ECLECTIC SPACE.



### ODDO TV STAND

MTVO22

W 240 CM . D 45 CM . H 50 CM  
MATERIALS: WOOD OR LACQUERED AND METAL,  
WITH 2 DOORS AND 2 DRAWERS - **3900P**

MATERIALS: WOOD OR LACQUERED, STONE AND  
METAL, WITH 2 DOORS AND 2 DRAWERS - **5100P**

THE ODDO TV STAND IS A VERSATILE PIECE THAT COMBINES AN ELEGANT AND USEFUL DESIGN. THE CERAMIC TOP AND METAL FRIEZES GIVE IT REFINEMENT, AND THE VERSATILITY OF DOORS, DRAWERS AND SHELVES GIVE IT A USEFUL ASPECT.



### VENICE TV STAND

MTVO27

W 220 CM . D 55 CM . H 40 CM  
MATERIALS: WOOD OR LACQUERED AND METAL.  
WITH 2 DOORS AND 1 DRAWER - **5300P**

MATERIALS: WOOD OR LACQUERED, STONE AND  
METAL. WITH 2 DOORS AND 1 DRAWER - **6350P**

THE CONTEMPORARY DESIGN OF VENICE IS DEFINED BY CONTRASTS. THIS TV STAND FUSES STRAIGHT, THIN LINES WITH ROUND ANGLES, MAKING IT A VERSATILE AND STYLISH SOLUTION FOR ANY CONTEMPORARY LIVING ROOM.





SOFA



CASINO SOFA

sof03 |

MATERIALS: METAL + 15M OF FABRIC

W 250 CM . D 110CM . H 82 CM - 5000P

WITH STRAIGHT LINES AND A SIMPLE DESIGN, CASINO IS A CONTEMPORARY AND COMFORTABLE SOFA THAT FITS WELL IN A MODERN LIVING ROOM.





### LEAF SOFA

SOFO32

MATERIALS: METAL + 15M OF FABRIC  
W 360 CM . D 230 CM . H 75 CM - **7200P**

LEAF SOFA IS FULLY UPHOLSTERED IN VELVET AND WILL SHINE IN ANY LIVING ROOM SETTING. THIS CURVED SOFA WILL GIVE A GLAMOUR FEEL TO ANY RESIDENTIAL PROJECT.



### FOXY SOFA

SOFO21

MATERIALS: METAL + 13M OF FABRIC  
W 326 CM . D 158 CM . H 76 CM - **5900P**

IRREVERENT AND BOLD, IT'S A PIECE WITH LOTS OF PERSONALITY. ITS FINISHES AND CURVED LINES PROVIDE A RELAXED AND ELEGANT LOOK.







MALIBU SOFA

SOFO33

MATERIALS: WOOD, STONE AND METAL  
+ 18M OF FABRIC  
W 375 CM . D 290 CM . H 75 CM - **7200P**

MALIBU HAS A CURVED SHAPE WITH A MINIMAL AND CONTEMPORARY UPHOLSTERY. ITS ELEGANT SIDE TABLE GIVE IT AN IMPOSING LUXURY DETAIL.

THIS SOFA IS THE ULTIMATE HOMAGE TO COMFORT, APPEALING TO THE COZINESS AND WARMTH OF THE LIVING ROOM.



MOROCCO SOFA

SOFO35

MATERIALS: WOOD, STONE AND METAL  
+ 26M OF FABRIC  
W 420 CM . D 310 CM . H 78 CM - **11950P**

A DISTINCTIVE SOFA OF STRAIGHT LINES AND CONTEMPORARY CHARACTER. MOROCCO SOFA PRESENTS A METALLIC DETAIL THAT HOLDS AND BOUNDS LEGS' WOOD AND THE SOFT UPHOLSTERY, MAKING THIS SOFA AN ELEGANT AND TIMELESS PIECE.



MITSON SOFA

SOFO34

MATERIALS: WOOD, STONE AND METAL  
+ 15M OF FABRIC  
W 430 CM . D 175 CM . H 65 CM - **7750P**

MITSON SOFA HOLDS AN APPEALING AURA THAT TRANSPIRES ALL ITS COMFORT. COMPLEMENTED WITH A CENTRAL COFFEE TABLE MADE IN WOOD AND MARBLE. THIS BEAUTIFUL SOFA, IT'S A CHARMING SOLUTION FOR A MODERN AMBIENCE.



POTER SOFA

SOFO36

MATERIALS: METAL + 9M OF FABRIC  
W 240 CM . D 120 CM . H 70 CM - **6930P**

POTER IS A SOFA, OF GENEROUS PROPORTIONS, A SIMPLE SHAPE AND ELEGANT CURVES. THE COMFORTABLE UPHOLSTERY ALLOWS A FLEXIBLE SEATING SOLUTION. STATING ITSELF AS A BOLD DESIGN PIECE THAT WILL STAND OUT IN ANY LIVING ROOM.







A TRUE CHIC DINING AREA

MAKES A LASTING IMPRESSION

DINING  
ROOM









DINING TABLE



AUSTIN DINING TABLE

MREO25

MATERIALS: WOOD, LACQUERED OR GLASS AND  
METAL

W 240 CM . D 110 CM . H 76 CM - 6700P

THE CURVED AND PROVOCATIVE FORM IS  
DELICATELY ADORNED IN GOLD METAL WITH  
A WOOD VENEER TOP AND BRASS DETAILS,  
FOR A SPECIAL TOUCH.





BILLY DINING TABLE

MRE033

W 220 CM . D 110 CM . H 75 CM

MATERIALS: WOOD OR LACQUERED AND METAL - **6600P**

MATERIALS: WOOD OR LACQUERED, STONE AND METAL - **8450P**

BILLY DINING TABLE IS A SIMPLE YET SO-SOPHISTICATED PIECE. THE GENEROUS SILHOUETTE FUSES WITH THE MARBLE NOBILITY, CONTRASTING WITH A BEAUTIFUL WOOD AND METAL DETAILS.



CLAIR DINING TABLE

MRE032

MATERIALS: WOOD OR LACQUERED AND METAL

W 240 CM . D 110 CM . H 76 CM - **6600P**

A DISTINCTIVE DINING TABLE, WHERE THE METAL EMBEDDED IN THE WOOD STANDS OUT. ELEGANTLY REFINED, IT ADDS A TOUCH OF LUXURY TO ANY DINING ROOM.







DUSTIN DINING TABLE

MRE030

MATERIALS: WOOD OR LACQUERED AND METAL  
W 220 CM . D 100 CM . H 76 CM - **6400P**

THE DUSTIN DINING TABLE HAS A SIMPLE SHAPE WITH A NATURAL AND SLEEK LOOK INSPIRED IN THE MID-CENTURY MODERN STYLE.



MALALA DINING TABLE

MRE035

W 240 CM . D 110 CM . H 75 CM  
MATERIALS: WOOD OR LACQUERED AND METAL - **8200P**  
MATERIALS: WOOD OR LACQUERED, STONE AND METAL - **9800P**

PLAYING WITH FUNCTION AND SCULPTURAL FORM, MALALA DINING TABLE SHAPES A TIME-LESS EXPERIENCE THROUGH ITS CLASSICAL AURA AND THE FINEST MARBLE. DINING TABLE IDEAL FOR ELEGANT AND REFINED DINING ROOMS.



EDEN DINING TABLE

MRE034

W 240 CM . D 110 CM . H 75 CM  
MATERIALS: WOOD OR LACQUERED AND METAL - **4600P**  
MATERIALS: WOOD OR LACQUERED, STONE AND METAL - **6800P**

BEAUTY AND MODERNITY ARE IN THE DETAILS. EDEN DINING TABLE'S A SIMPLE LINES AND DISTINCTIVE METAL DETAILS MAKE OF IT A CONTEMPORARY STUNNING PIECE THAT ENRICHES ANY DINING ROOM.



MEMOIRE DINING TABLE

MRE036

W 240 CM . D 110 CM . H 75 CM  
MATERIALS: WOOD OR LACQUERED AND METAL - **8550P**  
MATERIALS: WOOD OR LACQUERED, STONE AND METAL - **10200P**

MEMOIRE DINING TABLE IS AN ELEGANT SOLUTION, BOTH VISUAL AND PHYSICALLY, TO DINING ROOMS OF CONTEMPORARY INTERIOR DESIGN.





NOAH DINING TABLE

MRE037

Ø160 CM . H 75 CM  
MATERIALS: WOOD OR LACQUERED  
AND METAL - **5400P**

MATERIALS: WOOD OR LACQUERED,  
STONE AND METAL - **7100P**

NOAH IT IS AN EXCLUSIVE DINING TABLE, WITH MARBLE TOP AND SCULPTURAL BASE FOR ADDING SOPHISTICATION TO ANY KIND OF HOME SETTING. THIS ROUND DINING TABLE IS COMBINES PERFECTLY LACQUERED WOOD AND METAL DETAILS, AND IT'S AN IDEAL SOLUTION FOR A CONTEMPORARY DINING ROOM OR IN A LUXURY KITCHEN.

WWW.ANA-ROQUE.COM  
FINISHES | HIGH GLOSS + 10%







CHAIR



ASTER CHAIR

CAD046

MATERIALS: METAL  
+ 2M FABRIC

W 64 CM . D 65 CM . H 86 CM - 850P

ASTER IS A BEAUTIFUL AND COMFY CHAIR. THE IMPOSING SOLID WOOD LEGS OF THIS DINING CHAIR, DUE TO THEIR CONSISTENCY AND DESIGN, EMBRACE AN UPHOLSTERED STRUCTURE GIVING ELEGANCE AND DETAIL NEEDED TO COMPLETE ANY CONTEMPORARY ROOM ENVIRONMENT.





**BLOOM CHAIR**

CAD023

MATERIALS: WOOD OR LACQUERED  
+ 1.5M FABRIC

W 60 CM . D 61 CM . H 75 CM - 700P

THE BLOOM DINING CHAIR, INSPIRED BY THE MID-CENTURY OCCASIONAL DESIGNS, FEATURES A SOLID WOOD STRUCTURE, WHICH MAKES IT A DURABLE CHAIR. BOTH THE SEAT AND THE BACK CUSHIONS ARE UPHOLSTERED, EVOKING A SOBER LOOK THAT CONTRASTS WITH BRASS DETAILS ON ITS LEGS.



**DIAME CHAIR**

CAD042

MATERIALS: METAL + 1.5M FABRIC

W 50 CM . D 50 CM . H 85 CM - 990P

THE DIAME CHAIR IS BOTH SIMPLE AND SOPHISTICATED, IT RESEMBLES A MID-CENTURY CHAIR BUT HAS A MIXED CONTEMPORARY SHAPE, IMPORTANT WHEN MATCHING DIFFERENT STYLES OR PATTERNS.



**EVANS CHAIR**

CAD012

MATERIALS: METAL + 1.5M FABRIC  
FABRICS COMB.: 1M STRUCTURE - 1M BACK AND SEAT

W 53 CM . D 56 CM . H 81 CM - 890P

THE EVANS CHAIR IS A TIMELESS AND UNFORGETTABLE PIECE INSPIRED BY SIMPLE FORMS. BESIDES BEING STYLISH, IT WAS MADE TO BE COMFORTABLE. THIS CHAIR PERFECTLY CUPS AROUND YOU WHILE BRINGING STYLE TO ITS SURROUNDINGS.



**DYTA CHAIR**

CAD043

MATERIALS: WOOD OR LACQUERED AND METAL + 1.5M FABRIC

W 48 CM . D 60 CM . H 87 CM - 1100P

AN ELEGANT DESIGN COMBINED TO THE WOOD WITH A STYLISH METAL FRISE CONFERS TO THE DYTA CHAIR A STUNNING PRESENCE IN ANY DINING ROOM.





## LULU CHAIR

CAD047

MATERIALS: WOOD OR LACQUERED  
+ 2M FABRIC

W 60 CM . D 56 CM . H 73 CM - I 200P

WITH A UNIQUE AND STUNNING DESIGN, LULU STUNS IN ITS BEAUTIFUL CUSTOMIZABLE TEXTILE AND BLACK LEGS. IT MIGHT BE THE MID-CENTURY INSPIRATION, IT COULD BE THE SIMPLE BUT SLEEK LINES, PERHAPS EVEN THE TEXTILE AND MATERIALS, BUT NO ONE CAN RESIST TO THIS CHAIR.





LYN CHAIR

CAD035

MATERIALS: METAL AND 1.5M FABRIC  
W 45 CM . D 51 CM . H 86 CM - 1100P

AN ELEGANT SEATING SOLUTION FOR YOUR DINING ROOM.  
WITH A BRASS STRUCTURE AND BOLD DESIGN, IT WILL BE THE FOCAL POINT ON ANY SET.



LYN II CHAIR

CAD036

MATERIALS: METAL AND 1.5M FABRIC  
W 45 CM . D 51 CM . H 107 CM - 1290P

THE LYN CHAIR HAS BEEN ADAPTED TO A HIGH STOOL, WITH A BRASS STRUCTURE AND A BOLD AND ELEGANT DESIGN, MAKING IT AN ELEGANT OPTION FOR A RELAXED AREA, SUCH AS THE BAR OR A KITCHEN ISLAND.







NILO CHAIR

CAD044

MATERIALS: WOOD OR LACQUERED AND METAL  
+ 1.5M FABRIC  
W 64 CM . D 54 CM . H 82 CM - 1450P

INSPIRED BY THE EXQUISITE SPIRIT OF THE ROYAL BANQUETS, NILO IS A COMFORTABLE CHAIR THAT CONVEYS LUXURY AND ELEGANCE. THE WOODEN LEGS HOLD THE SEPARATE SEAT AND BACK, ELEVATING THE LIGHTNESS INHERENT OF THIS DINING CHAIR. THE GOLD METAL DETAILS MAKE THIS PIECE IN THE MOST CHARMING DESIGNS AMONG THE NEW COLLECTION.





### NORMA CHAIR

CAD030

MATERIALS: METAL + 1.5M FABRIC  
W 57 CM . D 47 CM . H 69 CM - 1050P

NORMA DINING CHAIR IS FULL OF PERSONALITY, MAKING IT AN UNFORGETTABLE DESIGN PIECE NO MATTER WHERE IT IS PLACED.



### NORMA II CHAIR

CAD037

MATERIALS: METAL + 2.5M FABRIC  
FABRICS COMB.: 1.5M STRUCTURE - 1M BACK  
W 57 CM . D 47 CM . H 69 CM - 1200P

NORMA II DINING CHAIR HAS AN UNDOUBTABLE PERSONALITY AND INSPIRES COMFORT WHEREVER IT IS PLACED.  
AN UNFORGETTABLE DESIGN PIECE, THAT WILL BRING SOPHISTICATION TO ANY AMBIANCE.







PAMP CHAIR

CAD009

MATERIALS: WOOD OR LACQUERED  
+ 2M FABRIC

W 53 CM . D 59 CM . H 82 CM - 590P

A GREAT COMBINATION OF SIMPLE AND  
SOPHISTICATED.

ITS MINIMAL DESIGN AND RICHNESS OF  
THE MATERIALS USED MAKE THIS CHAIR A  
UNIQUE PIECE.



PUGGY CHAIR

CAD048

MATERIALS: METAL AND 1.6M FABRIC  
W 60 CM . D 55 CM . H 77 CM - 700P

THE SINOUS LINES AND ENVELOPING  
BODY OF PUGGY DINING CHAIR, CONVEY  
ALL THE COMFORT AND ELEGANCE TO IT  
INHERENT. A STRIKING PIECE THAT FILLS  
IN A DINING ROOM AND ONE OF THE MOST  
CHARMING DESIGNS AMONG OUR LUXURY  
COLLECTION.





## SNUG CHAIR

CAD045

MATERIALS: WOOD AND METAL AND 2M FABRIC  
FABRICS COMB.: 1.2M STRUCTURE - 1M BACK  
W 58CM . D 59 CM . H 83 CM - 1450P

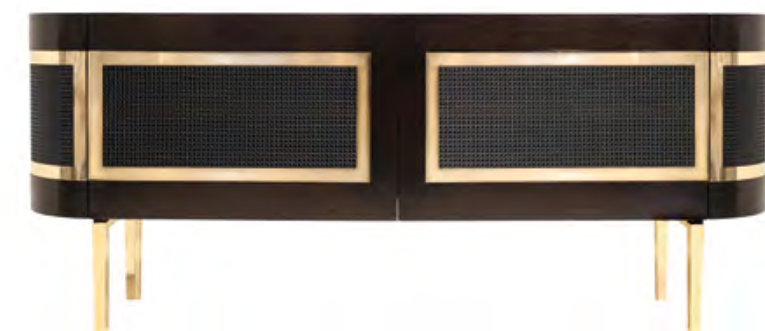
SNUG IS COMFORTABLE CHAIR WITH AN ELEGANT DESIGN, WHERE THE DOUBLE BACK AND THE BRASS TIPS STANDS OUT.







SIDEBOARD



### BULLOCK SIDEBOARD

APA028

MATERIALS: WOOD OR LACQUERED, METAL AND RATTAN - WITH 2 DOORS  
W 240 CM . D 45 CM . H 95 CM - 8400P

INSPIRED BY LUXURY AND NATURE, THIS RAVISHING HANDCRAFTED SIDEBOARD IS MADE OF A WOODEN STRUCTURE AND SURROUNDED BY GOLD-PLATED BRASS BARS AND RATTAN DETAILS.





CHARLIZE SIDEBOARD

APA004

MATERIALS: WOOD OR LACQUERED AND METAL  
WITH 4 DOORS  
W 195 CM . D 47 CM . H 95 CM - **3400P**  
W 240 CM . D 47 CM . H 95 CM - **3900P**

CHARLIZE IS A SIDEBOARD THAT WILL TAKE A STRONG BUT DELICATE PRESENCE TO YOUR LIVING ROOM. A MINIMAL DESIGN WITH SOFT LINES AND A BIG PERSONALITY THAT FITS ANY STYLE.



ELIOT SIDEBOARD

APA037

W 200 CM . D 45 CM . H 85 CM  
MATERIALS: WOOD OR LACQUERED AND METAL,  
WITH 3 DOORS - **8500P**

MATERIALS: WOOD OR LACQUERED, STONE AND METAL,  
WITH 3 DOORS - **9100P**

ELIOT SIDEBOARD HOLDS MORE THAN FIRST MEET THE EYE. WITH IMPOSING GOLD METAL LEGS AND DISPLAYING A PARTIALLY GROOVED STRUCTURE CONTRASTING WITH THE SIMPLE DOORS. THIS PIECE IS PERFECT FOR ANY DINING ROOM.



COLIN SIDEBOARD

APA031

MATERIALS: WOOD OR LACQUERED AND METAL  
+ 2M FABRIC WITH 2 DOORS  
W 240 CM . D 45 CM . H 85 CM - **6000P**

MADE OF THE FINEST MATERIALS, THE COLIN SIDEBOARD FEATURES A WOODEN FRAME WITH METAL DETAILING, SUPPORTED BY AN ELEGANT GOLD METAL FEET.



FOZ SIDEBOARD

APA038

W 240 CM . D 45 CM . H 85 CM  
MATERIALS: WOOD OR LACQUERED AND METAL, WITH 2  
DOORS, 2 DRAWERS - **7650P**

MATERIALS: WOOD OR LACQUERED, STONE AND METAL,  
WITH 2 DOORS, 2 DRAWERS - **8250P**

FOZ IS A SIDEBOARD WITH MODERN LINES, DISTINGUISHED BY THE SYMMETRICAL PATTERN CARVED INTO THE STRUCTURE. THIS CHARMING SIDEBOARD BRINGS MODERNIST CHARACTER AND SOPHISTICATED DESIGN.





MISIA SIDEBOARD

APA039

W 220 CM . D 45 CM . H 85 CM  
MATERIALS: WOOD OR LACQUERED AND METAL. WITH 4 DOORS - **7100P**

MATERIALS: WOOD OR LACQUERED, STONE AND METAL. WITH 4 DOORS - **7750P**

HOLDING STRONG LINES AND A FIRM PERSONALITY, MISIA IS A SIDEBOARD OF MODERN LINES, DISTINGUISHING ITSELF DUE TO THE LUXURY FINISHES.



VENICE SIDEBOARD

APA040

W 240 CM . D 50 CM . H 85 CM  
MATERIALS: WOOD OR LACQUERED AND METAL WITH 2 DOORS, 3 DRAWERS - **7300P**

MATERIALS: WOOD OR LACQUERED, STONE AND METAL WITH 2 DOORS, 3 DRAWERS - **8100P**

THIS CHIC SIDEBOARD COMBINES A ROBUST ROUNDED WOOD BODY WITH A REFINED MARBLE TOP, CREATING A PERFECT BALANCE BETWEEN MATERIALS, WITHOUT DIVERGING FROM ITS INSPIRATION AND WITHOUT COMPROMISING ITS BEAUTY IN ANY ROOM OR SETTING.







CUPBOARD



ALBA CUPBOARD

LOUO11

MATERIALS: WOOD OR LACQUERED, GOLD LEAF AND METAL WITH 1 DRAWER AND 2 DOORS

W 80 CM . D 50 CM . H 163 CM - 3600P

A DARING AND ELEGANT LACQUERED WOOD STRUCTURE, WITH A LUXURIOUS GOLD LEAF INTERIOR, AND DELICATE BLACK METAL LEGS WITH BRASS TIPS.





### ELIOT CUPBOARD

LOU023

MATERIALS: WOOD OR LACQUERED AND METAL WITH 2 DOORS

W 110 CM . D 45 CM . H 160cm - **7100P**

THE ELIOT CUPBOARD, MUCH LIKE ITS SIBLING ELIOT SIDEBOARD, IS A HIGHLY SOPHISTICATED PIECE INSPIRED BY A TIMELESS EXPERIENCE THROUGH ITS CLASSICAL AURA. A VERSATILE SOLUTION THAT FITS ANY KIND OF DINING ROOM.



### FOZ CUPBOARD

LOU024

MATERIALS: WOOD OR LACQUERED AND METAL WITH 2 DOORS

W 110 CM . D 45 CM . H 160 CM - **7200P**

FOZ CUPBOARD IS A STATEMENT CUPBOARD OF MODERN DESIGN. THIS CUPBOARD IS ONE OF THE MOST EXQUISITE PIECES TO GRACE THE LUXURY COLLECTION. IT IS METHODICALLY HANDCRAFTED BY DIFFERENT MASTER CRAFTSMEN OF WOOD CARVING. THESE CHARACTERISTICS MAKES THIS CLASSY SIDEBOARD A SUITABLE PIECE TO INTEGRATE INTO ANY CONTEMPORARY SPACE.



### MISIA CUPBOARD

LOU026

MATERIALS: WOOD OR LACQUERED AND METAL WITH 2 DOORS AND 2 DRAWERS

W 130 CM . D 45 CM . H 160 CM - **6750P**

THE MISIA CABINET OFFERS A GENEROUS AMOUNT OF STORAGE SPACE, WHILE LENDING AN IMPONENT EYE-CATCHING PRESENCE TO ANY ROOM. GOLD METAL DETAILS ADD AN EXTRAORDINARY LOOK. A UNIQUE PIECE FOR THOSE WHO HAVE A PECULIAR TASTE FOR NEW EDITIONS AND CONCEPTUAL DESIGNS.



### HABANA CUPBOARD

LOU025

MATERIALS: WOOD OR LACQUERED AND METAL WITH 2 DOORS AND 1 DRAWER

W 100 CM . D 45 CM . H 160 CM - **5000P**

HABANA IS A CABINET WITH SIMPLE LINES, WITH A MODERN DESIGN AND IMPOSING ENOUGH TO FILL A DINING ROOM. IT FEATURES DIFFERENTIATED HANDLES THAT DISGUISE THE JOINTS AND BREAKS IN THE DOORS, CONVEYING A VERSATILE SOLUTION THAT FITS IN ANY KIND OF LIVING ROOM.





## LUXOR CUPBOARD

LOU019

MATERIALS: WOOD OR LACQUERED AND METAL  
WITH 1 DOOR  
W 65 CM . D 40 CM . H 142 CM - 5950P

THE EXUBERANT LUXOR CUPBOARD IS A  
PIECE WITH UNIQUE DETAILS. THE DESIGN  
IS MAINLY COMPOSED OF SHAPES FORMED  
BY TRIANGULAR INTERCEPTIONS MADE BY  
HAND IN MARQUETRY.





EXCITE YOUR SENSES

BEDROOMS TO MAKE YOU HAPPY

BED  
ROOM









BED



ABBI BED

CAMO II

SIMPLICITY AND ECLECTIC STYLE MARKS THIS PIECE, ABBI BED FITS SUPERBLY EVEN IN DELICATE BEDROOMS. EVERY DETAIL WAS MADE THINKING ABOUT COMFORT AND WELL-BEING.

MATERIALS: 8M FABRIC  
W 170 CM . D 215CM . H 125CM - **2350P**  
FOR MATTRESS: 160 X 200

MATERIALS: 9M FABRIC  
W 190 CM . D 215CM . H 125CM - **2400P**  
FOR MATTRESS: 180 X 200





**BOURBON BED**

CAM007

THE BOURBON BED IS FULLY UPHOLSTERED WITH A LACQUERED FRAME. THE ELEGANT SIMPLICITY AND VINTAGE GLAMOUR OF THIS BED MAKES IT A STUNNING ADDITION TO ANY BEDROOM.

MATERIALS: WOOD OR LACQUERED + 6.5M FABRIC  
W 310 CM . D 215 CM . H 120CM - **2700P**  
FOR MATTRESS: 160 X 200

MATERIALS: WOOD OR LACQUERED + 7M FABRIC  
W 335 CM . D 215 CM . H 120CM - **2800P**  
FOR MATTRESS: 180 X 200







CROWN BED

CAMO24

WITH MODERN LINES, BUT INSPIRED BY THE ROMANTIC STYLE, HIGHLIGHTED BY GOLD-PLATED BRASS FRIEZES AND RATTAN DETAILS, ITS DESIGN INCORPORATES DELICATE AND GRACEFUL CURVES, COMBINED WITH STUNNING CRAFTSMANSHIP THAT TAKES THE BED TO ANOTHER LEVEL.

MATERIALS: WOOD OR LACQUERED, RATTAN AND METAL + 7M FABRIC  
W 322 CM . D 215CM . H 120 CM - **4750P**  
FOR MATTRESS: 180 X 200



DAKOTA BED

CAMO22

ITS SIMPLICITY, ALLIED TO THE BRASS DETAILED FRAME, TURNS IT INTO A LAVISH BED IDEAL FOR DELICATE ROOMS WITH SOPHISTICATED AND ELEGANT ENVIRONMENTS.

MATERIALS: METAL AND 6M FABRIC  
W 173 CM . D 215 CM . H 140 CM - **3100P**  
FOR MATTRESS: 160 X 200

MATERIALS: METAL AND 7M FABRIC  
W 193 CM . D 215 CM . H 140CM - **3150P**  
FOR MATTRESS: 180 X 200









LOBBY BED

CAMO27

A HARMONIOUS DESIGN DEFINES AN ELEGANT AND MODERN BED. THE UPHOLSTERED HEADBOARD AND PANELS WITH TWO CONTRASTING FABRICS, AS WELL AS THE WOOD LEGS MAKES OF LOBBY BED A COMFORTABLE SOLUTION, BOTH VISUAL AND PHYSICALLY, FOR CONTEMPORARY INTERIOR DESIGN ROOMS.

MATERIALS: WOOD + 8.5M OF FABRIC  
W 210 CM . D 215 CM . H 108 CM - **3100P**  
FOR MATTRESS: 180 X 200

MATERIALS: WOOD AND METAL + 8.5M OF FABRIC  
W 210 CM . D 215 CM . H 108 CM - **3800P**  
FOR MATTRESS: 180 X 200



NORA BED

CAMO26

NORA BED IS FULLY UPHOLSTERED WITH AN ELEGANT BRASS DETAIL AT ITS BASE. SLEEK AND GLAMOROUS, IT'S A STUNNING ADDITION TO ANY BEDROOM.

MATERIALS: 9.5 + 2M OF FABRIC  
W 210 CM . D 235 CM . H 130 CM - **3400P**  
FOR MATTRESS: 180 X 200

MATERIALS: METAL + 9.5 + 2M OF FABRIC  
W 210 CM . D 235 CM . H 130 CM - **4100P**  
FOR MATTRESS: 180 X 200









RIO BED

CAMO25

RIO BED IS A MODERN PIECE, DESIGNED FOR ANY BEDROOM. WITH SIMPLE LINES AND A CONTEMPORARY DESIGN WHICH EMBODIES THE TRUE SENSE OF A STATEMENT PIECE, IT HAS TWO UPHOLSTERED STRUCTURES FOR A CUSTOMIZABLE HEADBOARD. THIS MAGNIFICENT LUXURY BED TRANSFORMS ANY ROOM INTO THE MOST EXCLUSIVE SPACE.

MATERIALS: 10M OF FABRIC  
W 210 CM . D 215 CM . H 130 CM - **3250P**  
FOR MATTRESS: 180 X 200

MATERIALS: METAL + 10M OF FABRIC  
W 210 CM . D 215 CM . H 130 CM - **3950P**  
FOR MATTRESS: 180 X 200



SENSATION BED

CAM002

THE SENSATION BED IS FULLY UPHOLSTERED WITH AN ASYMMETRIC SEAM. IT HAS A MODERN APPEAL AND AN ELEGANT SIMPLICITY ALLOWING IT TO SHINE IN ANY CHARMING BEDROOM.

MATERIALS: 6M OF FABRIC  
W 186 CM . D 215 CM . H 130 CM - **1900P**  
FOR MATTRESS: 160 X 200

MATERIALS: 7M OF FABRIC  
W 206 CM . D 215 CM . H 130CM - **1980P**  
FOR MATTRESS: 180 X 200





A vanity area featuring a white vanity table with a dark wood top and a round gold-framed mirror. A teal ottoman is positioned in front of the vanity. A vase with greenery sits on the vanity.

A white bedside table with a dark wood top and gold handles, positioned next to the bed.

A teal upholstered bed with a tufted headboard, white pillows, and a teal duvet cover. A matching teal ottoman is positioned at the foot of the bed.

A white bedside table with a dark wood top and gold handles, positioned next to the bed, featuring a modern lamp with two white spheres.





BEDSIDE TABLE



AMAN BEDSIDE TABLE

MCA030

W 60 CM . D 40 CM . 42 CM

MATERIALS: WOOD, LACQUERED AND METAL  
WITH 1 DRAWER - **2250P**

MATERIALS: WOOD, LACQUERED, METAL AND STONE  
WITH 1 DRAWER - **2550P**

THE AMAN BEDSIDE TABLE HAS AN IMPOSING AND LUXURIOUS CHARACTER. ITS STRUCTURE IN NOBLE WOOD, WITH A STONE TOP AND METAL DETAILS MAKE IT A DISTINCTIVE PIECE.





**BENNY BEDSIDE TABLE**

MCA031

W 60 CM . D 42 CM . H 50 CM

MATERIALS: WOOD OR LACQUERED AND METAL  
WITH 1 DRAWER - **2500P**

MATERIALS: WOOD OR LACQUERED, METAL AND  
STONE - WITH 1 DRAWER - **3000P**

BENNY BEDSIDE TABLE HAS A ROUND SHAPE,  
WHICH GIVES IT LIGHTNESS, ACCENTUATED  
BY THE DRAPING EFFECT PROVIDED BY THE  
RIBS IN THE WOOD.



**CHARLIZE BEDSIDE TABLE**

MCA012

MATERIALS: WOOD OR LACQUERED AND METAL  
WITH 2 DRAWERS

W 60 CM . D 45 CM . H 50 CM - **1250P**  
W 80 CM . D 45 CM . H 50 CM - **1300P**

CHARLIZE IS A BEDSIDE TABLE THAT WILL  
BRING A STRONG BUT DELICATE PRESENCE  
TO YOUR BEDROOM.

INSPIRED BY A MINIMAL DESIGN, WITH SOFT  
LINES AND BIG PERSONALITY, FITS IN ANY  
STYLE.



**CONCH BEDSIDE TABLE**

MCA032

W 55 CM . D 40 CM . H 38CM

MATERIALS: WOOD OR LACQUERED AND METAL  
WITH 2 DRAWERS - **2400P**

MATERIALS: WOOD OR LACQUERED, METAL AND  
STONE - WITH 2 DRAWERS - **2650P**

THIS IS A TIMELESS PIECE. CONCH BEDSIDE  
TABLE HAS A REFINED AND SOPHISTICATED  
CHARACTER, ACCENTUATED BY THE STONE  
TOP AND GOLDEN BASE.



**DRAKE BEDSIDE TABLE**

MCA021

MATERIALS: WOOD OR LACQUERED AND METAL  
WITH 2 DRAWERS  
W 70 CM . D 45 CM . H 50 CM - **1300P**

THE DRAKE BEDSIDE TABLE IS A VINTAGE-  
INSPIRED PIECE. THIS EXQUISITE DESIGN  
PIECE STANDS OUT OUTSIDE OF ITS HISTO-  
RICAL TIME AND WILL ENHANCE THE BEAUTY  
OF YOUR MODERN BEDROOM SET.





ELLIOT BEDSIDE TABLE

MCA033

W 59 CM . D 40 CM . 40 CM

MATERIALS: WOOD OR LACQUERED, METAL  
WITH 1 DRAWER - **2050P**

MATERIALS: WOOD OR LACQUERED, METAL AND  
STONE WITH 1 DRAWER - **2250P**

WITH A GEOMETRIC DESIGN, THIS BEDSIDE  
TABLE HAS A SUBTLE ELEGANCE.  
IT LOOKS GOOD BOTH IN A CLASSIC ROOM AS  
WELL AS IN A CONTEMPORARY ENVIRONMENT.







### GOA BEDSIDE TABLE

MCA024

W 60 CM . D 45 CM . 50 CM

MATERIALS: WOOD OR LACQUERED  
WITH 1 DRAWER - 1500P

MATERIALS: WOOD OR LACQUERED AND STONE  
WITH 1 DRAWER - 1750P

A GLAMOROUS AND SIMPLE PIECE THAT COM-  
BINES ELEGANCE WITH REFINEMENT. SYMBOL  
OF LUXURY COMBINED WITH SIMPLICITY.



### MINELLI BEDSIDE TABLE

MCA011

MATERIALS: WOOD OR LACQUERED AND METAL  
+ 1M FABRIC WITH 2 DRAWERS

W 70 CM . D 45 CM . H 50 CM - 1200P

MINELLI NIGHTSTAND IS A PIECE OF CHARM  
FOR ITS SIMPLICITY AND ELEGANCE, ABLE  
TO CLING TO ANY SPACE.





MISIA BEDSIDE TABLE

MCA034

W 64 CM . D 43 CM . H 43CM

MATERIALS: WOOD OR LACQUERED, METAL WITH 2 DRAWERS - **2400P**

MATERIALS: WOOD OR LACQUERED, METAL AND STONE WITH 2 DRAWERS - **2650P**

SOPHISTICATED, ELEGANT AND DISTINCT. THIS IS MISIA. A REMARKABLE COMBINATION OF MODERN DESIGN AND LUXURIOUS DETAILS MAKES IT A OUTSTANDING BEDSIDE TABLE.



MOA BEDSIDE TABLE

MCA029

MATERIALS: WOOD OR LACQUERED AND METAL WITH 2 DRAWERS + 1M FABRIC

W 60 CM . D 45 CM . H 48CM - **1950P**

MOA BEDSIDE TABLE IS AN ELEGANT AND GLAMOROUS PIECE, WITH UPHOLSTERED DRAWERS AND A BASE WITH METAL DETAIL THAT GIVES IT A UNIQUE REFINEMENT.







MOONLIGHT BEDSIDE TABLE

MCA035

W Ø50 . H 45CM

MATERIALS: WOOD OR LACQUERED , METAL WITH 2 DRAWERS - **2750P**

MATERIALS: WOOD OR LACQUERED , METAL AND STONE WITH 2 DRAWERS - **2950P**

ITS ARTISTIC CONCEPTION, BASED ON THE TRADITIONAL WISDOM OF THE ARTISANS, MAKES MOONLIGHT A COMPLETELY UNUSUAL BEDSIDE TABLE.

WITH A ROUND SHAPE, ACCENTUATED BY THE DRAPING MADE OF WOOD, AND THE TOP IN STONE, IT IS A LUXURIOUS PIECE OF EXTREME ELEGANCE.



MYLO BEDSIDE TABLE

MCA028

MATERIALS: WOOD OR LACQUERED AND METAL W 70 CM . D 42 CM . H 51 CM - **1400P**

ITS SIMPLE LINES AND METAL DETAILS MAKE IT A SYMBOL OF MINIMAL ELEGANCE AND THE PERFECT COMBINATION BETWEEN SIMPLICITY AND SOPHISTICATION.



OTTO BEDSIDE TABLE

MCA036

MATERIALS: WOOD OR LACQUERED AND METAL WITH 1 DRAWER

W 62 CM . D 42 CM . H 48CM - **1800P**

OTTO BEDSIDE TABLE HAS A VINTAGE SOUL. THE SMOOTH FORM AND THE BRASS DETAILS GIVES IT A SUBTLE ELEGANCE.



YVES BEDSIDE TABLE

MCA037

W Ø50 . H 50CM

MATERIALS: WOOD OR LACQUERED, METAL - **2200P**

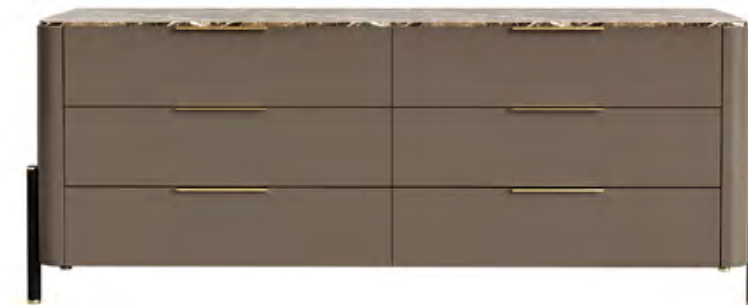
MATERIALS: WOOD OR LACQUERED, METAL AND STONE - **2500P**

ELEGANT, THIS CHARMING PIECE COMBINES NATURAL WOOD THAT CONTRAST WITH THE POLISHED STONE AND THE BRASS ACCENTS. YVES BEDSIDE TABLE IS AN HARMONIOUS PIECE, THAT FITS WELL BOTH IN A CONTEMPORARY OR MODERN ENVIRONMENT.





CHEST OF DRAWERS



AMAN CHEST OF DRAWERS

COMO30

W 160 CM . D 55 CM . H 65 CM

MATERIALS: WOOD OR LACQUERED AND METAL  
WITH 6 DRAWERS - **4400P**

MATERIALS: WOOD OR LACQUERED, STONE AND  
METAL. WITH 6 DRAWERS - **5200P**

AMAN CHEST OF DRAWERS STANDS OUT FOR ITS CURVED AND SMOOTH LINES, WHICH GIVE IT A MODERN AND SOPHISTICATED TOUCH.

A BLENDING COMBINATION OF STONE AND LACQUER, WITH ELEGANT HANDLES MAKES THIS CHEST OF DRAWERS A REMARKABLE PIECE.





CHARLIZE CHEST OF DRAWERS

COM007

MATERIALS: WOOD OR LACQUERED AND METAL  
WITH 6 DRAWERS  
W 160 CM . D 57 CM . H 67 CM - **2700P**

CHARLIZE WILL BRING A STRONG BUT DELI-  
CATE PRESENCE TO YOUR BEDROOM.

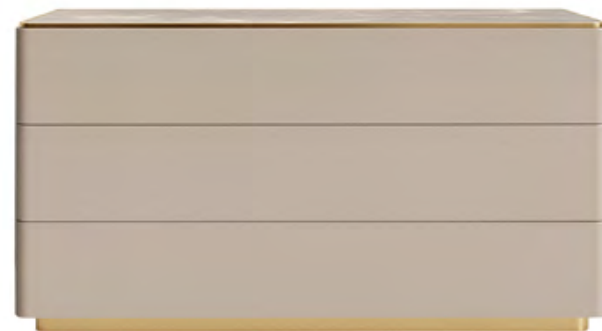


DRAKE CHEST OF DRAWERS

COM019

MATERIALS: WOOD OR LACQUERED AND METAL  
WITH 3 DRAWERS  
W 150 CM . D 55 CM . W 80 CM - **3400P**

THE DRAKE CHEST OF DRAWERS HAS AN EX-  
QUISITE DESIGN THAT STANDS OUT OUTSIDE  
OF HISTORICAL TIME, IT WILL ENHANCE THE  
BEAUTY OF YOUR MODERN BEDROOM SET.



CONCH CHEST OF DRAWERS

COM031

W 140 CM . D 57 CM . H 75 CM  
MATERIALS: WOOD OR LACQUERED AND METAL  
WITH 3 DRAWERS - **4400P**

A CLASSIC PIECE, WITH ROUNDED CORNERS,  
AND A BOLDY TOP MADE OF STONE, CONCH  
EXUDES STYLE AND SIMPLICITY.

MATERIALS: WOOD OR LACQUERED, STONE AND  
METAL. WITH 3 DRAWERS - **5000P**



MINELLI CHEST OF DRAWERS

COM006

MATERIALS: WOOD OR LACQUERED AND METAL  
WITH 6 DRAWERS AND 1.4M OF FABRIC  
W 160 CM . D 55 CM . W 80 CM - **3700P**  
W 180 CM . D 55 CM . W 80 CM - **3800P**

THE MINELLI CHEST OF DRAWERS IS A PIECE  
OF CHARM FOR ITS SIMPLICITY AND ELEGAN-  
CE, ABLE TO CLING TO ANY SPACE.





### MOA CHEST OF DRAWERS

COMO29

MATERIALS: WOOD OR LACQUERED AND METAL  
WITH 3 DRAWERS + 1,5M FABRIC  
W 160 CM . D 55 CM . H 82 CM - **4200P**

MOA CHEST OF DRAWERS IS AN ELEGANT AND GLAMOROUS PIECE, WITH UPHOLSTERED DRAWERS AND A BASE WITH A SHINING METAL THAT GIVES IT A UNIQUE REFINEMENT.



### MOONLIGHT CHEST OF DRAWERS

COMO32

W 160 CM . D 55 CM . H 70 CM  
MATERIALS: WOOD OR LACQUERED, METAL  
WITH 3 DRAWERS - **6700P**

MATERIALS: WOOD OR LACQUERED,  
METAL AND STONE. WITH 3 DRAWERS - **7400P**

MOONLIGHT IS A BEAUTIFUL AND REFINED PIECE, FULL OF SOUL WHERE THE CRAFTSMANSHIP IS VERY EVIDENT. INSPIRED BY A VINTAGE STYLE, BUT WITH A TOUCH OF MODERNITY THAT GIVES IT A TIMELESS CHARACTER, IT LOOKS WONDERFUL IN ANY ENVIRONMENT.





MYLO CHEST OF DRAWERS

COMO28

MATERIALS: WOOD OR LACQUERED AND METAL  
WITH 4 DRAWERS  
W 180 CM . D 44 CM . H 68 CM - **3400P**

WITH A REVIVALIST STYLE AND A VINTAGE INSPIRATION, THIS PIECE STANDS OUT FOR THE FINE AND LUXURIOUS DETAILS CONFERRED BY THE BRASS AND THE NOBILITY OF WOOD, WHICH GIVES THIS PIECE A CLASSIC AND TIMELESS CHARACTER.



VENICE CHEST OF DRAWERS

COMO33

W 160 CM . D 55 CM . H 65 CM  
MATERIALS: WOOD OR LACQUERED AND METAL  
WITH 3 DRAWERS - **4500P**

MATERIALS: WOOD OR LACQUERED, STONE AND METAL  
WITH 3 DRAWERS - **5300P**

VENICE CHEST OF DRAWERS IS A CLASSIC PIECE, NATURALLY ELEGANT, WITH CLEAN LINES, AND A FUNCTIONAL DESIGN. MADE IN WOOD OR LACQUERED, IT STANDS UP DUE THE MARBLE TOP THAT BRINGS IT TO ANOTHER LEVEL







BENCH



AMER POUF

BANO38

MATERIALS: WOOD AND METAL + 1,6M FABRIC  
W Ø48 CM . H 45 CM - 1300P

THE SOFTNESS AND THE MOVEMENT, GIVES PERSONALITY TO THIS TIMELESS DESIGN PIECE. THE DELICATE SHAPE MAKES AMER POUF A COMFORTABLE SOLUTION TO ANY CONTEMPORARY INTERIOR.





### ANTOINETTE BENCH

BANO | 4

MATERIALS: WOOD OR LACQUERED AND METAL  
+ 3.8M FABRIC

W 160 CM . D 50 CM . H 65 CM - **1600P**  
W 180 CM . D 50 CM . H 65 CM - **2400P**

THE ANTOINETTE BENCH WAS INSPIRED BY THE 18TH-CENTURY FRENCH COURT. IT IS A VERY LUXURIOUS PIECE, WITH DELICATE VELVET UPHOLSTERY, A BEAUTIFUL WOODEN FRAME, AND GILDED METAL LEGS. THIS PIECE IS THE BEST SEAT OF ANY GLAMOROUS SPACE.







### BERKE POUF

BAN036

MATERIALS: WOOD AND METAL + 1.7M FABRIC  
W Ø52 CM . H 53 CM - **3300P**

A HIGHLY STYLISH OTTOMAN WITH A SMOOTH AND ELEGANT SHAPE. MADE WITH DELICATE FABRIC, THIS PIECE HAS A BEAUTIFUL FOOT WITH LUXURIOUS DETAILS IN GOLD METAL. BERKE PUFF WILL BRING AN ATTRACTIVE PRESENCE TO ANY ROOM, HOTEL SUITE, OR MASTER BEDROOM.



### BERKE II BENCH

BAN037

MATERIALS: WOOD AND METAL + 3.7M FABRIC  
W 150 CM . D 45 CM . H 50 CM - **6000P**

WITH A CONTEMPORARY LINE, AND AN ORGANIC SHAPE, WHERE THE ROUND-SHAPED FEET STAND OUT, THE BERKE STOOL IS DISTINGUISHED BY THE COMBINATION OF MATERIALS INSPIRED BY NATURE, WHICH GIVE IT A LIGHT AIR, COMBINED WITH BRASS DETAILS THAT ALLOW IT TO SHINE IN A MODERN AND LUXURIOUS BEDROOM.





BRISTOL POUF

BANO39

MATERIALS: METAL AND 1M + 0.6M FABRIC  
W 52 CM . D 52 CM . H 42 CM - 2300P

A CONTEMPORARY DESIGN, WITH A SQUARE FORM, MADE WITH THE BEST MATERIALS. A TIMELESS PIECE WITH A MODERN TWIST, BRISTOL STOOL EMBRACES A BOUNDLESS ELEGANCE.



DRAPER POUF

BANO40

MATERIALS: WOOD AND METAL + 1.6M FABRIC  
W Ø50 CM . H 42 CM - 990P

A MODERN AND SIMPLE DESIGN DEFINES DRAPER POUF, WHICH DISPLAYS AN UPHOLSTERED STRUCTURE AND A GOLD-TONE METAL RING DETAIL. THE MIX OF MATERIALS CONVEYS A VERSATILE CHARACTER TO THIS PIECE, EASILY FITTING TO A MODERN BEDROOM.







## EROS BENCH

BANO41

MATERIALS: WOOD AND METAL + 2M FABRIC  
W 130 CM . D 42 CM . H 43 CM - 3300P

EROS BENCH IS A COMBINATION BETWEEN CLASSIC AND MODERN DESIGN. FEATURING A LACQUERED STRUCTURE CRAFTED WITH BRASS DETAILS, AND A BEAUTIFUL GOLD METAL LEGS, IT SUPPORTS AN UPHOLSTERED SEAT THAT ACQUIRES A SOFTER TOUCH FINISH IN VELVET. EROS BENCH IS A COMFORTABLE SOLUTION TO ANY CHARMING INTERIOR.





FOXY POUF

BANO27

MATERIALS: METAL AND 1M FABRIC  
W 045 CM . H 45 CM - 550P

IRREVERENT PIECES WITH LOTS OF PERSONALITY. THEIR CURVED LINES AND FINISHES PROVIDES A RELAXED AND STYLISH LOOK, AND THE BRASS BASE MAKES IT ESPECIALLY CHARMATIC.

FOXY WILL ADD REFINED ELEGANCE TO ANY LIVING ROOM SET THAT ONLY THIS RANGE OF PRODUCTS IS CAPABLE OF.



FOXY II POUF

BANO34

MATERIALS: METAL AND 1M OF FABRIC  
W 40 CM . D 40 CM . H 46 CM - 550P



KEIRA BENCH

BANO05

MATERIALS: LACQUERED WOOD AND METAL  
+ 1.5M OF FABRIC  
W 140 CM . D 45 CM . H 45 CM - 1250P

KEIRA BENCH IS FULLY UPHOLSTERED WITH A CUSHION ACCENTED WITH SOFT TUFTINGS, AND COMPLETED WITH SLEEK WOOD LEGS WITH BRASS DETAILS. A COMFORTABLE BENCH FOR ANY AMBIANCE OR DECOR.



KLEIN BENCH

BANO31

MATERIALS: METAL AND 2.5M OF FABRIC  
W 080 CM . H 48 CM - 1300P

KLEIN IS A ROUND-SHAPED BENCH. FULLY UPHOLSTERED IN VELVET, IT HAS BRASS DETAILS IN THE MIDDLE OF THE STRUCTURE AND GILDED METAL LEGS. THIS OTTOMAN WILL BRING AN ATTRACTIVE PRESENCE TO ANY ROOM, HOTEL SUITE OR MASTER BEDROOM.





OMON BENCH

BANO35

MATERIALS: METAL AND 2.5M FABRIC  
W 135 CM . D 45 CM . H 38 CM - 1900P

UPHOLSTERED IN PANELS, AND WITH A BASE IN RECESSED WOOD, AND METAL DETAILS, OMON BENCH IS A REFINED PIECE, GLAMOROUS AND ELEGANT, THAT WILL GLOW IN ANY BEDROOM.



SWING POUF

BANO33

MATERIALS: METAL AND 1.5M FABRIC  
W Ø45 CM . H 49 CM - 1200P

THE USE OF CURVED SHAPES RESULTS IN STYLISH PIECES. THE SPHERICAL METAL TERMINALS BRINGS SOPHISTICATION, COMBINING COMFORT AND ELEGANCE. IT IS A MODERN POUF ABLE TO TRANSFORM ANY ENVIRONMENT.



SELECT POUF

BANO42

MATERIALS: WOOD AND METAL + 1M FABRIC  
W Ø50 CM . H 38 CM - 2100P

COMBINING A COMFY UPHOLSTERED CUSHION WITH AN WOODEN STRUCTURE, THAT LAYS IN A GOLD METAL FEET CONNECTED BY A METAL STRUCTURE, MAKES SELECT BENCH A COMFORTABLE SOLUTION TO ANY CONTEMPORARY INTERIOR THAT DESERVES IDENTITY. SELECT IT!



TREVI BENCH

BANO43

MATERIALS: METAL AND 4M FABRIC  
W 180 CM . D 62 CM . H 58 CM - 2405P

WITH COMFORT AS ITS MAIN FOCUS, THE TREVI BENCH FEATURES AN IMPOSING STRUCTURE ENTIRELY UPHOLSTERED, WITH GOLDEN METAL FEET, CONVEYING SECURITY AND WELL-BEING TO A BEDROOM, THE MOST INTIMATE AND PERSONAL SPACE IN ONE'S HOME.





DRESSING TABLE



BELLE DRESSING TABLE

DRE001

MATERIALS: WOOD AND METAL  
7 DRAWERS

W 150 CM . D 48 CM . H 75 CM - 4600P

THIS BEAUTIFUL DRESSING TABLE FUSES AN AESTHETIC AND REFINED DESIGN, IMPROVISING A MODERN STYLE, ACCENTUATED BY THE CONTRAST ON THE LEGS, AND THE INCLUSION OF A MIRROR ON THE TOP. THE DETAILS IN GOLD METAL GIVES THE LUXURY ACCENT.





MOA DRESSING TABLE

DRE002

MATERIALS: WOOD AND METAL WITH 1 M FABRIC  
2 DRAWERS

W 160 CM . D 55 CM . H 80 CM - **4500P**

OUR MOA DRESSING TABLE IS A FEAST FOR THE EYES.

OWNER OF A DELICATE SHAPE, WITH A SUBLIME ELEGANCE, IT HAS A LUXURIOUS TOUCH ACCENTUATED BY THE DRAWERS LINED IN LEATHER, AND THE BRASS DETAILS.







NINA DRESSING TABLE

DRE003

MATERIALS: WOOD AND METAL WITH I M FABRIC  
6 DRAWERS

W 140 CM . D 50 CM . H 80 CM - 5500P

INNOVATIVE, BUT WITH A CLASSIC TOUCH,  
NINA IS A CHARISMATIC PIECE, WITH A  
MODERN CHARACTER.  
IT COMBINES THE VARIOUS GEOMETRIC SHA-  
PES IN AN ELEGANT AND APPEALING DESIGN.





CHAISE LONGUE



### GLEM CHAISE LONGUE

CHLOIO

MATERIALS: METAL WITH 9M FABRIC  
W 240 CM . D 86 CM . H 80 CM - **4050P**

GLEM CHAISE IS A COMFORTABLE AND GLAMOROUS PIECE, WITH CURVED ARMREST AND DOUBLE CUSHION BACK.

ITS CLEAN LINES ADD SOPHISTICATED STYLE TO BOTH A LIVING ROOM AND A BEDROOM.





MARY CHAISE LONGUE

CHLOÏ I

MATERIALS: METAL WITH 8M FABRIC  
W 180 CM . D 140 CM . H 74 CM - 4700P

WITH AN OVAL SHAPE, AND TOTALLY UPHOLSTERED, MARY IT IS A COZY CHAISE, FLUFFY AND COMFORTABLE, RAISED FROM AN ELEGANT METAL BASE THAT UNDERSCORE ITS FINE DESIGN QUALITIES. IT CERTAINLY WILL TAKE A SPOT IN ANY CONTEMPORARY SPACE.





THE ENTRY  
IS THE SOUL OF THE HOUSE

ENTRY  
HALL









CONSOLE



AMAN CONSOLE

CONO29

W 180 CM . D 45 CM . H 75 CM

MATERIALS: WOOD OR LACQUERED AND METAL  
WITH 3 DRAWERS - **4100P**

MATERIALS: WOOD, STONE AND METAL  
WITH 3 DRAWERS - **4900P**

WITH AN IMPOSING AND LUXURIOUS CHARACTER, AMAN CONSOLE HAS A FUNCTIONAL ASPECT, WITH AN APPEALING DESIGN. ITS NOBLE WOODEN STRUCTURE, WITH A STONE TOP AND METAL DETAILS MAKE IT A DISTINCTIVE PIECE.





BULLOCK CONSOLE

CONO25

MATERIALS: WOOD OR LACQUERED, METAL AND RATTAN - WITH 2 DRAWERS  
W 180 CM . D 45 CM . H 85 CM - 4600P

MUCH LIKE ITS PAIR, THE BULLOCK SIDEBOARD, IS AN ELEGANT AND MODERN PIECE THAT WILL NICELY COMPLEMENT YOUR HALL OR LIVING ROOM.



BLOCK CONSOLE

CONO30

W 150 CM . D 45 CM . H 75 CM

MATERIALS: WOOD OR LACQUERED AND METAL - 3400P  
MATERIALS: WOOD, STONE AND METAL - 4200P

A CONSOLE FEATURING SIMPLE, CONTEMPORARY. WITH FLEXIBLE FINISHES, LIKE MARBLE, LACQUERED OR WOOD, IT IS ADAPTABLE TO A LIVING ROOM OR AN ENTRY HALL.







### EDEN CONSOLE

CONO31

W 120 CM . D 40 CM . H 75 CM

MATERIALS: WOOD OR LACQUERED AND METAL - **2300P**  
MATERIALS: WOOD, STONE AND METAL - **2900P**

EDEN CONSOLE IS A SIMPLE LINES AND DISTINCTIVE METAL DETAILS MAKE OF IT A CONTEMPORARY STUNNING PIECE THAT ENRICHES ANY SPACE.



### MELODI CONSOLE

CONO10

MATERIALS: WOOD OR LACQUERED AND METAL  
W 180 CM . D 40 CM . H 80 CM - **2650P**

MATERIALS: WOOD, STONE AND METAL  
W 180 CM . D 40 CM . H 80 CM - **3400P**

SOPHISTICATED GOLDEN DETAILS WITH WELL-DEFINED GEOMETRIC SHAPES RESULT IN A SIMPLE AND ELEGANT PIECE.





MALALA CONSOLE

CONO32

W 180 CM . D 45 CM . H 75 CM

MATERIALS: WOOD OR LACQUERED AND METAL - **4700P**  
MATERIALS: WOOD, STONE AND METAL - **5400P**

REMINING THE RENAISSANCE ERA, WITH A SCULPTURAL FORM, MALALA CONSOLE SHAPES A TIMELESS EXPERIENCE THROUGH ITS CLASSICAL AURA AND THE FINEST MARBLE. THE ULTIMATE TOUCH OF SOPHISTICATION AND LUXURY.



MARK CONSOLE

CONO33

W 160 CM . D 45 CM . H 75 CM

MATERIALS: WOOD OR LACQUERED AND METAL - **3500P**  
MATERIALS: WOOD, STONE AND METAL - **4400P**

MARK IS A ELEGANT AND REFINED CONSOLE. THE COMBINATION OF DIFFERENT PRECIOUS MATERIALS AND ITS ELEGANT LINES MAKE IT SUITABLE FOR CONTEMPORARY CHIC URBAN ENVIRONMENTS AS WELL AS FOR MORE CLASSIC AND LUXURIOUS SPACES.



MOOD CONSOLE

CONO34

W 180 CM . D 45 CM . H 75 CM

MATERIALS: WOOD OR LACQUERED AND METAL - **2750P**  
MATERIALS: WOOD, STONE AND METAL - **3550P**

USING A COMBINATION OF SHAPES AND MATERIALS SUCH AS LACQUERED METAL, MARBLE AND WOOD. MOOD HAVE A BOLD AND CONTEMPORARY PERSONALITY THANKS ITS ECLECTIC ELEGANCE IN ANY CONTEXT.



VIVIEN CONSOLE

CONO08

MATERIALS: WOOD OR LACQUERED AND METAL  
W 180 CM . D 40 CM . H 87 CM - **2950P**

MATERIALS: METAL AND STONE  
W 180 CM . D 40 CM . H 87 CM - **3750P**

A STUNNING POLISHED MARBLE TOP IS HELD BY AN ELEGANT AND ASYMMETRICAL STRUCTURE CREATING A UNIQUE CONTRAST BETWEEN THE MATERIALS





MIRROR



BOHO MIRROR

ESPO18

MATERIALS: STONE, METAL AND MIRROR  
W Ø80 CM . D 4 CM - 2700P

MATERIALS LIKE MIRROR AND GOLDEN METAL ARE COMBINED IN PERFECT HARMONY TO CREATE A MASTERPIECE LIKE THE BOHO MIRROR. A SIMPLE YET UNIQUE LUXURY ITEM THAT CAPTURES BOTH THE FUNCTIONALITY OF A MIRROR AND THE SPLENDOR OF AN ART PIECE. DECORATIVE AND SOPHISTICATED.





**ECLOSION MIRROR**

ESPO19

MATERIALS: STONE, METAL AND MIRROR  
W 60 CM . D 3 CM . H 120 CM - **1200P**

ECLOSION IS A SIMPLE YET SOPHISTICATED MIRROR THAT RESULTS FROM THE INTERSECTION OF GEOMETRIC SHAPES. A COMPOSITION OF SMOOTH SURFACES, IT IS PERFECT FOR BOTH A MODERN LIVING ROOM AND A MINIMALIST BEDROOM, IMPROVING THE DECOR AND ADDING A PERSPECTIVE OF SPACE.



**JACOB MIRROR**

ESPO17

MATERIALS: METAL AND MIRROR  
W 50 CM . D 3 CM . H 80 CM - **700P**

WITH SIMPLE LINES, THIS STYLISH MODERN MIRROR ALLURES BEAUTY TO ANY AMBIANCE.



**KANSAS MIRROR**

ESPO20

MATERIALS: STONE, METAL AND MIRROR  
W Ø100 CM . H 4 CM - **2100P**

DISPLAYING A MODERN AND ELEGANT DESIGN, THE KANSAS MIRROR WAS INSPIRED BY THE WINDOWS OF MEDIEVAL CATHEDRALS. COMBINING ITS CURVED SHAPE WITH LUXURIOUS MATERIALS SUCH AS MARBLE AND GOLDEN METAL, IT IS AN ELEGANTLY DESIGNED PIECE THAT ADDS VALUE TO ANY CONTEMPORARY DECOR.



**VALEY MIRROR**

ESPO21

MATERIALS: WOOD, METAL AND MIRROR  
W 62 CM . D 3 CM . H 80 CM - **1300P**

ICONIC AND UNPARALLELED, THE VALEY MIRROR PRESENTS A GEOMETRIC AND ORGANIC SILHOUETTE. THIS PIECE IS GRACED WITH THE ABILITY TO CREATE MODERN AND EXCLUSIVE AMBIANCES.





LUNA MIRROR

ESPO 13

MATERIALS: METAL AND MIRROR  
W Ø80 CM . D 5 CM - 1200P

LUNA IS A MODERN AND CONTEMPORARY MIRROR, BORN FROM GEOMETRIC SHAPES IN BRASS WITH A TOUCH OF ART DECO REVIVALISM.



LUNA II MIRROR

ESPO 14

MATERIALS: METAL AND MIRROR  
W Ø80 CM . D 5 CM - 1200P



LUNA III MIRROR

ESPO 15

MATERIALS: METAL AND MIRROR  
W Ø80 CM . D 5 CM - 1500P







COLUMN



CAIRO COLUMN

COLN008

MATERIALS: WOOD, METAL AND STONE  
W 40 CM . D 40 CM . H 115 CM - 3500P

A HYMN TO SOPHISTICATION AND DESIGN, THE CAIRO COLUMN CREATES A STRONG PRESENCE THAT WILL REVOLUTIONIZE THE LOOKS OF ANY PROJECT. ITS STRAIGHT LINES CONTRIBUTED TO A GLORIOUS BUILD, EMBODYING THE SPIRIT OF EXCLUSIVE DESIGN. A DARING AND ELEGANT BALANCE BETWEEN MARBLE, WOOD AND BRASS LINES.





GRAZ COLUMN

COLN009

MATERIALS: WOOD, METAL AND STONE  
W 42 CM . D 42 CM . H 115 CM - 1900P

THE ELEGANCE OF THE GRAZ COLUMN ECHOES IN ITS SHAPE AND MATERIALS. SIMPLE YET SOPHISTICATED, THE GENEROUS SILHOUETTE FUSES WITH THE GOLD METAL NOBILITY, CONTRASTING WITH WOOD BASE AND MARBLE TOP. ITS PRESENCE WILL BRING LUMINOSITY TO ANY LIVING ROOM DESIGN.



MARION COLUMN

COLN010

MATERIALS: WOOD, METAL AND STONE  
W 38 CM . D 38 CM . H 110 CM - 2000P

THE MARION COLUMN MIGHT BE ONE OF THE MOST UNIQUE PIECES IN THE LUXURY COLLECTION. INSPIRED BY BEAUTIFUL MODERN ARCHITECTURE, THIS MODERN COLUMN IS A CLASSY DESIGN PIECE THAT WOULD ADD VALUE TO ANY CONTEMPORARY DECORATION.



SLIM COLUMN

COLN001

MATERIALS: WOOD OR LACQUERED AND METAL  
W 38 CM . D 38 CM . H 140 CM - 1100P

THE ELEGANT SHAPES, CLEAN LINES AND GLOSSY BRASS STRUCTURE OF THE SLIM COLUMN TRULY EMBODIES WHAT AN ESSENTIAL PIECE THIS IS.



TOPO COLUMN

COLN011

MATERIALS: WOOD, METAL AND STONE  
W 38 CM . D 38 CM . H 112 CM - 2300P

THIS SIMPLE AND CLEAN COLUMN IS BOTH SOBER AND STUNNING. WITH ITS WOODEN STRUCTURE AND MARBLE TOP, IT MAKES THIS COLUMN A UNIQUE PIECE THAT YOU WOULD BE PROUD TO PRESENT IN YOUR HOME OR PROJECT.



AN HARMONIOUS OFFICE

PEACEFUL ATMOSPHERE FOR MIND

OFFICE

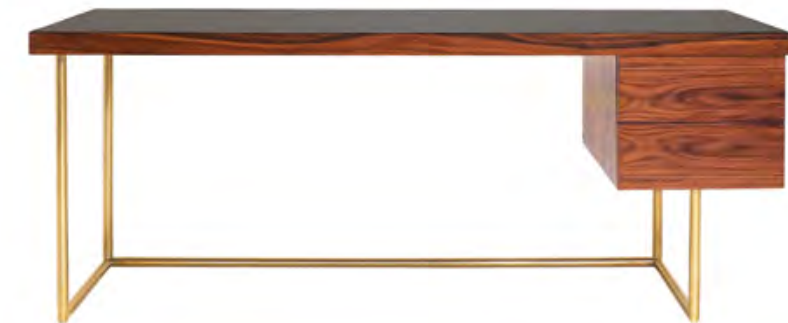








DESK



**BOWIE DESK**

SEC005

MATERIALS: WOOD OR LACQUERED AND METAL  
WITH 2 DRAWERS  
W 200 CM . D 60 CM . H 80 CM - **4950P**

THE BOWIE DESK COMBINES THREE DIFFERENT MATERIALS AND FINISHES - IRONWOOD VENEER, BLACK GLASS, AND ANTIQUE BRASS.





### KEPLER DESK

SEC004

MATERIALS: WOOD AND LACQUERED  
WITH 2 DRAWERS

W 180 CM . D 76 CM . H 76 CM - 2300P  
W 210 CM . D 76 CM . H 76 CM - 2400P

THE KEPLER DESK HAS A CONTEMPORARY  
STYLE AND STRONG PERSONALITY WITH A  
SOLID STRUCTURE WITH A MINIMAL DESIGN.



### LOUIS DESK

SEC006

MATERIALS: WOOD OR LACQUERED AND METAL  
WITH 2 DRAWERS

W 140 CM . D 60 CM . H 84 CM - 6100P

THE LOUIS DESK HAS A CONTEMPORARY  
STYLE AND A CATCHING GLARE DUE TO ITS  
METAL FEET AND WOOD CRAFTSMANSHIP.







### NEW YORK DESK

SEC007

MATERIALS: WOOD OR LACQUERED AND METAL  
WITH 4 DRAWERS  
W 200 CM . D 70 CM . H 75 CM - 5100P

DISPLAYING A CLASSY AND MODERN DESIGN, NEW YORK DESK HAS BEEN INSPIRED BY THE ORGANIC SHAPES OF NATURE. COMBINING AN OVAL WOODEN TOP WITH A STRUCTURE COMPOSED OF LACQUERED DRAWERS AND METAL DETAILS, IT IS AN ELEGANTLY DESIGNED PIECE THAT WOULD ADD VALUE TO ANY CONTEMPORARY INTERIOR.







BOOKCASE



### AMAN BOOKCASE

ESTO 19

W 200 CM . D 40 CM . H 180 CM

MATERIALS: WOOD AND METAL  
WITH 4 DRAWERS AND 1 DOOR - 14500P

MATERIALS: WOOD, STONE AND METAL  
WITH 4 DRAWERS AND 1 DOOR - 15900P

THIS BOOKCASE IS A MODERN AND SOPHISTICATED PIECE. AMAN IS A VERSATILE SOLUTION THAT CREATES A SENSE OF MODERN GLAMOUR TO ANY HOME OFFICE SPACE. ITS SLEEK STRUCTURE IS ENHANCED BY A SERIES OF EXQUISITE FINISHES. AN ANTHEM OF SOPHISTICATION AND EXCLUSIVE DESIGN.





### AREZZO BOOKCASE

ESTO16

MATERIALS: WOOD, GLASS AND METAL  
WITH 2 DRAWERS AND 1 DOOR

W 160 CM . D 45 CM . H 200 CM - 10150P

THE AREZZO BOOKCASE IS CRAFTED WITH TIMELESS AND SUBTLE LINES, TO BE ABLE TO COMPLEMENT ANY INTERIOR. THIS FUNCTIONAL YET DECORATIVE BOOKCASE WILL SUBTLY ENHANCE YOUR CONTEMPORARY AND MODERN OFFICE DESIGN.



### BONDI BOOKCASE

ESTO17

MATERIALS: WOOD, LACQUERED AND METAL  
WITH 2 DRAWERS

W 200 CM . D 46 CM . H 205 CM - 8500P

THE ELEGANT SHAPE AND FLUID LINES OF BONDI BOOKCASE FOLLOWS THE AESTHETIC OF MODERN DESIGN. COMBINING WOODEN SHELVES WITH INLAID METAL DETAILS, MAKES THIS CONTEMPORARY BOOKCASE A SUITABLE PIECE TO INTEGRATE IN ANY MODERN ATMOSPHERE.



### ROCK BOOKCASE

ESTO18

MATERIALS: WOOD, LACQUERED AND METAL  
WITH 2 DRAWERS

W 160 CM . D 40 CM . H 180 CM - 5300P

A SIMPLE, MODERN AND SOPHISTICATED BOOKCASE. ROCK IS A VERSATILE SOLUTION, AS THIS PIECE SHOWS THE EXQUISITE CAPACITY TO FILL A VARIETY OF AMBIANCES THANKS TO ITS ELEGANT PRESENCE.





# LACQUER

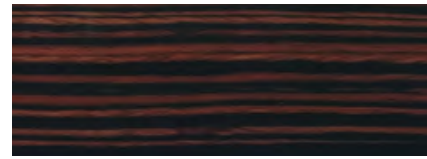
		
WHITE C 1	LIGHT GREY C 2	LIGHT TOUPE C 3
		
WHITE CREAM C 5	GREIJE C 6	TOBACCO C 7
		
GREEN TOUPE C 8	LIGHT BROWN C 9	QUARTZ GREY C 1 5
		
BLACK C 1 6	BLUE SAPHIR C 27	POOL GREY C 29
		
NIGHT BLUE C 33	BEIJE C 34	MARIN BLUE C 36
		
SOFT GREY C 38	DARK BROWN C 40	



# WOOD



PALISANDER W1



EBONY W2



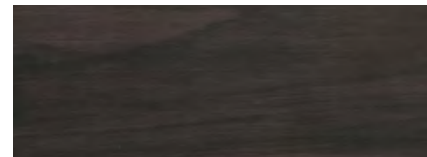
DARK BIRDSEYE W4



BIRCH W5



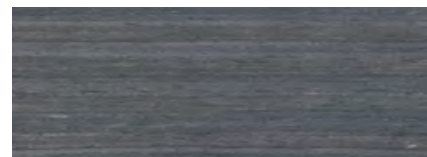
WALNUT W6



BLACK WALNUT W8



IRON WOOD W9



GREY OAK W12



EMBUIA W15



WALNUT ROOT W16



POPLAR ROOT W20



EUCALIPTUS FRISÉ W21



EUCALIPTUS FRISÉ HONEY W22



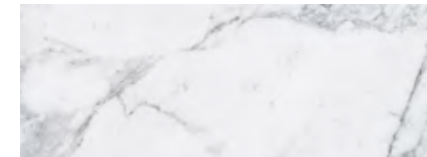
OAK W23



WENGUE W24

# STONE AND CERAMIC

## STONE



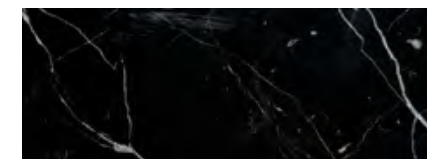
BIANCO CARRARA S2



EMPERADOR S3



TRAVERTINO LV S8

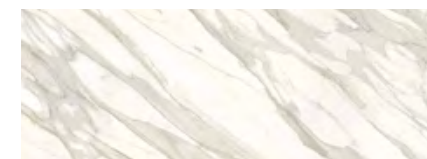


NERO MARQUINA S10

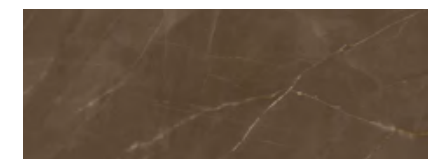


EMPERADOR CREME S11

## CERAMIC STONE



CALACATTA GOLD CT2



PULPIS CT3



ETERNAL MARQUINA CT4



# METAL

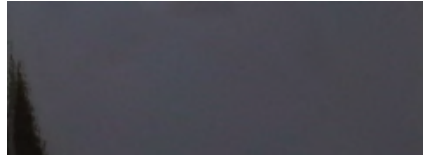
---

## POLISHED

---



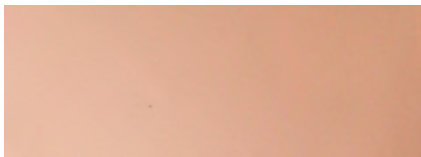
GOLD MP1



GUN METAL MP2



INOX MP3



COPPER MP4

## BRUSHED

---



GOLD MB1



GUN METAL MB2



INOX MB3